

iMON & Multi-Median Users Guide



SoundGraph, Inc.

Table of Contents

| | |
|--|----|
| In your Package | 4 |
| 1. iMON MM | 4 |
| 2. iMON MM PLUS | 4 |
| 3. iMON Inside | 4 |
| 4. iMON Inside PLUS | 4 |
| S/W, H/W Installation and Remote Controller | 5 |
| 1. Installation Process | 5 |
| 1) S/W Installation | 5 |
| 2) H/W (IR Receiver) Installation | 5 |
| 3) Execute iMON Manager | 7 |
| 2. Button Layout and its Feature of iMON Remote Controller | 8 |
| 1) iMON MM Remote Controller | 8 |
| 2) iMON RSC Remote Controller | 12 |
| Multi-Median Users Guide | 18 |
| 1. Screen Layout of 'Multi-Median' | 18 |
| 1) Main View | 18 |
| 2) Hard Disk Drive | 19 |
| 3) Media Folder View | 20 |
| 4) Media File View | 20 |
| 5) Media Preview | 21 |
| 6) Full Screen View | 22 |
| 7) DVD View | 22 |
| 8) TV View | 22 |
| 9) Digital Camcoder View | 22 |
| 2. Using Remote Controller on Multi-Median | 23 |
| 3. Using Mouse on Multi-Median | 25 |
| 4. Setting Environment | 26 |
| 1) Back | 26 |
| 2) Scan Media | 26 |
| 3) Music | 26 |
| 4) Movie | 26 |
| 5) Photo | 27 |
| 6) TV | 27 |

| | |
|--|----|
| 7) DVD | 27 |
| 8) Digital Camcoder | 27 |
| 5. Installation of Video Codec | 27 |
| iMON Users Guide | 29 |
| 1. Using Application Launcher | 29 |
| 2. Using Task Switcher | 29 |
| 3. Application Control | 30 |
| 4. Using All Time Control Mode | 30 |
| 5. Using Monitor Resolution Changer | 31 |
| 6. Using Timer | 31 |
| 7. Using Virtual Keyboard | 32 |
| 8. Register New Remote Controller | 33 |
| 9. Setting Program Command | 33 |
| 10. Setting Windows Command | 34 |
| 11. Setting Customized Windows Command | 34 |
| 12. Setting Macro | 35 |
| 13. Setting Option | 35 |
| Update of iMON & Multi-Median | 37 |
| SoundGraph, Inc. | 38 |

In your Package



iMON product lineup is divided into four different models according to the remote controller and IR receiver. Each product is composed as like follows. Please check the components on the below in your box.

1. iMON MM



In the Box : 1 iMON MM Remote Controller, 1 iMON Station (External IR Receiver), 1 Installation CD (iMON Manager, Multi-Median), 2 AAA Batteries, 1 Users Guide

2. iMON MM PLUS



In the Box : 1 iMON RSC Remote Controller, 1 iMON Station (External IR Receiver), 1 Installation CD (iMON Manager, Multi-Median), 2 AAA Batteries, 1 Users Guide

3. iMON Inside



In the Box : 1 iMON MM Remote Controller, 1 iMON Station inside (Internal IR Receiver), 1 Installation CD (iMON Manager, Multi-Median), 2 AAA Batteries, 1 Users Guide

4. iMON Inside PLUS



In the Box : 1 iMON RSC Remote Controller, 1 iMON Station inside (Internal IR Receiver), 1 Installation CD (iMON Manager, Multi-Median), 2 AAA Batteries, 1 Users Guide

S/W, H/W Installation and Remote Controller



Please read this users guide before the installation of your iMON Station (IR Receiver).

1. Installation Process

1) S/W Installation

Insert iMON&Multi-Median Installation CD to your CD ROM, and install the iMON Manager and Multi-Median according to the auto running S/W installation process.

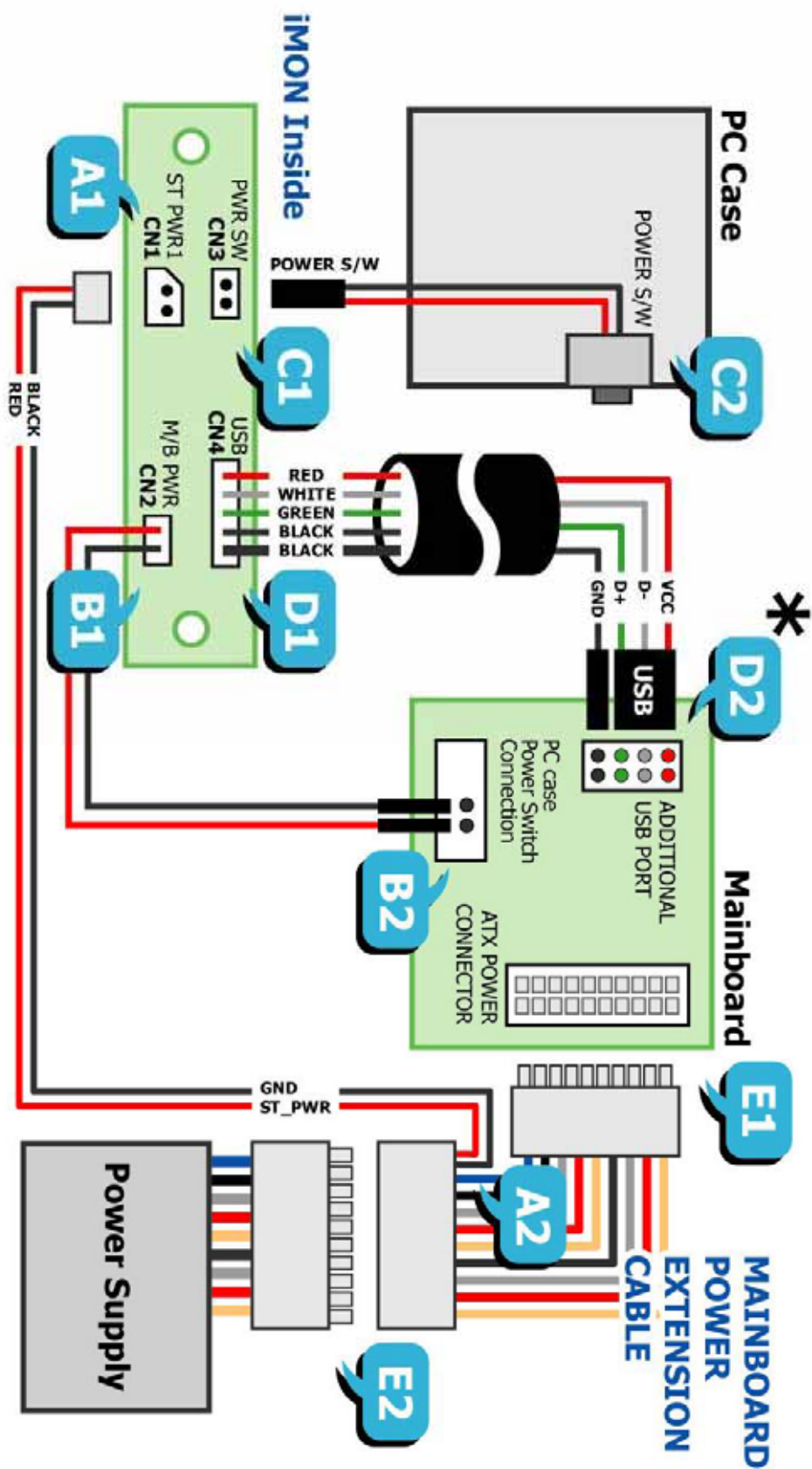
2) H/W (IR Receiver) Installation

External iMON Station Installation

Connect your External iMON Station to your USB port, then assign the H/W driver according to the 'Found New H/W Wizard'. Assign the CD ROM drive for searching H/W driver.

Internal iMON Station Installation

Internal iMON Station can be loaded to the 3.5" floppy drive bay. The additional feature of internal type iMON Station is that you could power on your PC system using the power button of the remote controller. After turn off your PC system, open your PC case and connect the cable to its proper pin refer to the following picture.



Internal iMON Station is connected to mainboard with two cables, PC case with one cable, Power Supply with one another cable. You should be careful to connect these four cables refer to your mainboard manual. The connectors that each cable needs to be connected are as like follows.

| 1. Stand-By Power Connection Cable | |
|---|--|
| A1 : (2pin, iMON Inside ' ST PWR1 ' connector) | A2 : (2pin, Mainboard power extension cable) |

| 2. Mainboard Power Switch Connection Cable | |
|---|---|
| B1 : (2pin, iMON Inside ' M/B PWR ' connector) | B2 : (2pin, Mainboard power switch connector) |

| 3. PC Case Power Switch Connection Cable | |
|---|---|
| C1 : (2pin, iMON Inside ' PWR S/W ' connector) | C2 : (2pin, PC Case power switch connector) |

| 4. Mainboard USB Connection Cable | |
|--|---|
| D1 : (5pin, iMON Inside USB connector) | D2 : (4pin, Mainboard USB internal connector) |

The names of the additional USB port pins on the mainboard manual are different with the manufacturer. Please refer to the following table to connect the USB cable.

| Line Color | Additional USB Port Pin Name |
|------------|--------------------------------------|
| RED | VCC , POWER, USBPOWER |
| WHITE | D- , DATA-, USBP#-, UP#-, P#- |
| GREEN | D+ , DATA+, USBP#+, UP#+, P#+ |
| BALCK | GND , GROUND |

After all the connection finished, turn on your system. You may see the 'Found New H/W Wizard' when Windows starts. Assign the CD ROM drive for searching H/W driver like the external USB iMON station setup process.

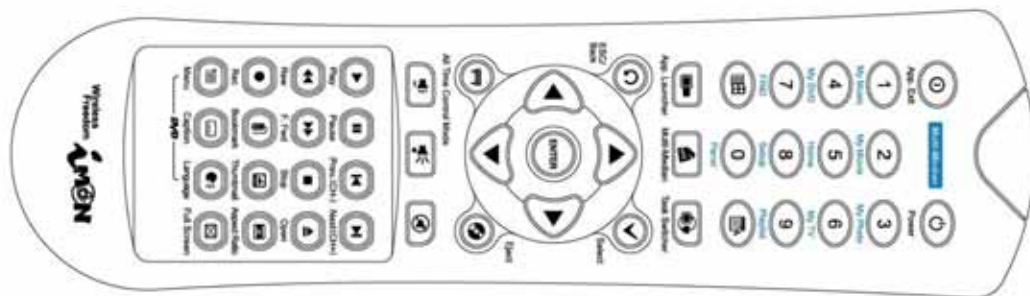
3) Execute iMON Manager

After finish the S/W and H/W installation, please execute the iMON Manager using the desktop

iMON icon. Please refer to the iMON Users Guide in order to learn about the various settings and usage of iMON Manager.

2. Button Layout and its Feature of iMON Remote Controller

1) iMON MM Remote Controller



iMON MM (Multi-Median) remote controller is designed in order to use every functions of Multi-Median. The detail features of each button are as like follows.



Power : This button is used to turn on or turn off the PC. You need to push this button more than 2 seconds in order to turn off the PC.



The Power ON feature is supported on the internal type iMON Station model, iMON Inside, iMON Inside PLUS only.



App. Exit : This button generates the keyboard short cut, [ALT]+[F4], which is used for closing the active window.



Num 0~9 : The numeric buttons from 0 to 9 are custom buttons that could be assigned by users. These buttons act as a shortcut of the media view on the Multi-Median application as printed like below the button.



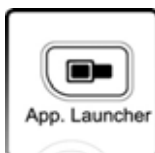
Please refer to the Multi-Median Users Guide in order to learn about the button usage on the Multi-Median.



Windows : This button brings the start menu and acts like the [Windows logo] key of the keyboard.



Menu : This button brings the menu and acts like the [menu] key of the keyboard.



App. Launcher : This button runs the Application Launcher which could execute many assigned windows applications.



Task Switcher : This button is used for choosing the application among the current running applications. This feature is similar to the [ALT]+[TAB] keyboard command.



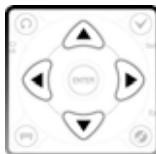
Multi-Median : This button runs the Multi-Median which is provided with the iMON Manager. You could enjoy the various media files like DVD, Movie, Music, Photo and use the multimedia device like TV card, Digital Camcorder, and Digital Camera.



ESC/Back : This button is used as same like [ESC] key of the keyboard.



Select : This button is used as same like [Spacebar] key of the keyboard.



Up, Down, Left, Right : These buttons are used as same like four way arrow keys of the keyboard.



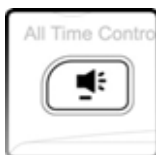
Enter : This button is used as same like [Enter] key of the keyboard.



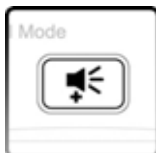
All Time Control Mode : This button used for the 'All Time Control Mode' of the iMON Manager. Please refer to the iMON Users Guide for the details of the 'All Time Control Mode'.



Eject : This button is used to open and close the CD/DVD ROM.



VOL - : This button is used to reduce the PC system volume.



VOL + : This button is used to increase the PC system volume.



MUTE : This button is used to mute the PC system volume.



Play : This button is used to generate 'Play' command in the various media applications.



Pause : This button is used to generate 'Pause' command in the various media applications.



Prev : This button is used to generate 'Previous' command in the various media applications and also worked as 'Channel Up' on the TV related applications.



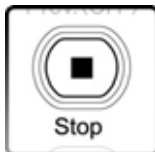
Next : This button is used to generate 'Next' command in the various media applications and also worked as 'Channel Down' on the TV related applications..



Rew : This button is used to generate 'Rewind' command in the various media applications



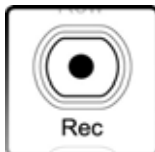
F.Fwd : This button is used to generate 'Fast Foward' command in the various media applications.



Stop : This button is used to generate 'Stop' command in the various media applications.



Open : This button is used to generate 'File/Folder Open' command in the various media applications.



Rec : This button is used to generate 'Record' command in the various media applications.



Bookmark : This button is used to generate 'Bookmark' command in the various media applications.



Thumbnail : This button is used to generate 'Thumbnail' command in the various media applications.



Aspect Ratio : This button is used to generate 'Change the Aspect Ratio' command in the various media applications.



Menu : This button is used to generate 'DVD Menu' command in the DVD applications.



Caption : This button is used to generate 'Change the Caption/Subtitle' command in the DVD applications.

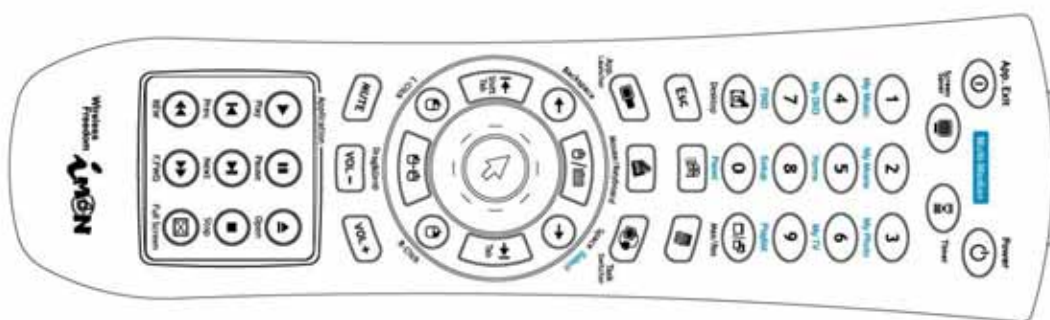


Language : This button is used to generate 'Change the Language/Audio' command in the DVD applications.



Full Screen : This button is used to generate 'Full Screen' command in the various media applications.

2) iMON RSC Remote Controller



iMON RSC (Remote Stick Controller) Remote Controller is designed to control the mouse pointer in 16 directions using the Joystick of the remote controller. The detail features of each button are as like follows.



Power : This button is used to turn on or turn off the PC. You need to push this button more than 2 seconds in order to turn off the PC.



The Power ON feature is supported on the internal type iMON Station model, iMON Inside, iMON Inside PLUS only.



App. Exit : This button generates the keyboard short cut, [ALT]+[F4], which is used for closing the active window.



Screen Saver : This button runs the screen saver instantly.



Timer : This button runs the timer setup screen of the iMON manager. This timer feature could turn off the PC or set the alarm assigned by timer setup.



Num 0~9 : The numeric buttons from 0 to 9 are custom buttons that could be assigned by users. These buttons act as a shortcut of the media view on the Multi-Median application as printed like below the button.



Please refer to the Multi-Median Users Guide in order to learn about the button usage on the Multi-Median.



Desktop : This button toggles 'show desktop/restore all'. This button has the same function as the keyboard shortcut [Windows Logo] +[D].



Max/Res : This button toggles 'maximize/restore' the active window.



ESC : This button is used as same like [ESC] key of the keyboard.



Windows : This button brings the start menu and acts like the [Windows logo] key of the keyboard.



Menu : This button brings the menu and acts like the [menu] key of the keyboard.



App. Launcher : This button runs the Application Launcher which could execute many assigned windows applications.



Multi-Median : This button runs the Multi-Median which is provided with the iMON Manager. You could enjoy the various media files like DVD, Movie, Music, Photo and use the multimedia device like TV card, Digital Camcorder, and Digital Camera.



Task Switcher : This button is used for choosing the application among the current running applications. This feature is similar to the [ALT]+[TAB] keyboard command.



Backspace : This button is used as same like [Backspace] key of the keyboard.



Space (Select) : This button is used as same like [Space] key of the keyboard. And this button is used for select the media folder and file in the Multi-Median application.



Shift+Tab : This button is used as same like [Shift]+[TAB] key of the keyboard.



Tab : This button is used as same like [TAB] key of the keyboard.



Mouse/Keyboard : This button is used to toggle the 'Joystick' operation mode of iMON RSC. This button could toggles the mode of the Joystick between Mouse mode and Keyboard mode. The following two states show the each mode, mouse and keyboard.



The mouse icon in the iMON Indicator on the screen means that you could use Joystick as a mouse. You could move the mouse pointer using the Joystick lever and you could get the [double click] action when you push the Joystick.



The keyboard icon in the iMON Indicator on the screen means that you could use Joystick as four way arrow keys of the keyboard. You could get the [Enter] key command when you push the Joystick.



L. Click : This button is used as same like [Left Click] button of the mouse.



R. Click : This button is used as same like [Right Click] button of the mouse.



Drag&Drop : This button has same function as the [Drag and Drop] function of a mouse. Push this button at the position to start drag and move to the wanted position using the Joystick, and then push again to drop, then you could get the same result as like mouse [drag&drop].



Joystick : (mouse mode) This button controls a mouse cursor by moving Joystick and [double-click] of mouse by pressing Joystick knob like a button.

(Keyboard mode) This button acts like same function as four way keyboard arrow keys by moving stick and same function as [Enter] key by pressing

Joystick knob like a button.



MUTE : This button is used to mute the PC system volume.



VOL - : This button is used to reduce the PC system volume.



VOL + : This button is used to increase the PC system volume.



Play : This button is used to generate 'Play' command in the various media applications.



Pause : This button is used to generate 'Pause' command in the various media applications.



Open : This button is used to generate 'File/Folder Open' command in the various media applications.



Prev : This button is used to generate 'Previous' command in the various media applications and also worked as 'Channel Up' on the TV related applications.



Next : This button is used to generate 'Next' command in the various media applications and also worked as 'Channel Down' on the TV related applications.



Stop : This button is used to generate 'Stop' command in the various media applications.



Rew : This button is used to generate 'Rewind' command in the various media applications



F.Fwd : This button is used to generate 'Fast Foward' command in the various media applications.



Full Screen : This button is used to generate 'Full Screen' command in the various media applications.

Multi-Median Users Guide

Multi-Median is designed to enjoy the media files like Music, Movie, Photo and use the multimedia device like DVD, TV, Digital Camcorder and Digital Camera using only remote controller. It is easier and more convenient to read this Users Guide before using the Multi-Median.

1. Screen Layout of Multi-Median

1) Main View

Run the Multi-Median using the '**Multi-Median**' button of the iMON MM or iMON RSC remote controller, you could see the main view of Multi-Median as like below picture. The icons on the menu bar located on the upper side of the main view show the each devices and functions as like below. Select the icon using the arrow key of the remote controller, and execute it using the 'Enter' button of the remote controller. The detail functions of icons are as like follows.



- Hard Disk Drive : You could enjoy the Music, Movie, Photo saved on the HDD using this icon.
- CD/DVD : You could enjoy the Music, Movie, Photo saved on the CD or watching the DVD movie using this icon.
- TV : You could see and record the TV channels through the TV card in your PC. Multi-Median could support the most of analog TV cards. Before watching the TV channel, you should select the TV card in your PC. The detail description about this TV feature, please refer to the '**Setting Environment**'. **Time Shift and PVR feature would be upgraded on the next update version.**

- Digital Camcorder : Multi-Median supports the DV Digital Camcorder which is connected through the IEEE1394 port of PC. You could control your camcorder using the iMON remote controller and record the video clips of the camcorder. **Recording feature would be upgraded on the next update version.**
- Setting : You could customize the Multi-Median through setting menu. Please refer to the '**Setting Environment**' for detail description.
- Exit : You can go back to Windows.

2) Hard Disk Drive

If you select the 'Hard Disk Drive' icon, Multi-Median scans the media files, and shows the media types that you could choose. The functions of each icon are as like follows.



- My Music : This icon leads to the Music files scanned on your hard disk drive. The supported music files are MP3, WMA, OGG and WAV. Please refer to the '**Setting Environment**' in order to learn the details of scanning folders and file types.
- My Movie : This icon leads to the Movie, Video files scanned on your hard disk drive. The supported movie files are WMV, AVI, ASF, MPG, MPEG, M1V, MP2 and DAT. Please refer to the '**Setting Environment**' in order to learn the details of scanning folders and file types.
- My Photo : This icon leads to the Photo files scanned on your hard disk drive. The supported photo files are BMP, GIF, JPG, TIFF and PNG. Please refer to the '**Setting Environment**' in order to learn the details of scanning folders and file types.
- Rescan : You can rescan the folder that you set as a scan folder. If you download the media files from network or change the scan folder, you could update your media database using this icon. Please select the scan folder that has the media files, if you choose a root folder (like my computer) as a scan folder, it will take so much time to scan.

3) Media Folder View

If you choose the type of media like 'My Music', 'My Movie', 'My Photo', the media folder view will be appeared. In the case of 'My Movie' and 'My Photo', you could see the folders that contain the media files, you can group this folder view as folder. IN the case of 'My Music', you can assign 'Artist', 'Genre' and 'Album' as a media group. The below icons show the status of the media folder.



The number on the right up side of the folder image shows the number of the media files that this folder contains. The check mark on the left up side shows the status that all the media files in the folder are added to the current playlist. The three different folder images show the each status of the media files in the folder, these are 'all media files are added to the current playlist', 'some media files are added to the current playlist' and 'media files are not added to the current playlist'.

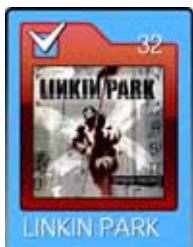


- Current Select Folder



The left folder icon which has green outline means that this folder is now selected. If you push the 'Enter' button of the remote controller, you can move to the media file view.

- Current Playing Folder



The left folder icon which has red outline means that this folder is now playing. If you open this folder, you could see the red outlined media file which is now playing.

4) Media File View

If you enter to the 'Media File View' from 'Media Folder View', you may see the following screen. There is a difference in the 'My Music View' and the other views as like follows.



You can enter to the 'Media Preview' from 'Media File View' after selecting the media file that you want.

5) Media Preview

Media Preview shows the information of the current playing media file. Media preview screen is composed of 'Title Bar' displays the title of the current media, 'State Bar' displays the sequence number in the playlist with current playing time, and the preview screen.



6) Full Screen View

Full Screen View shows the current playing media file on the full screen. If you want to see the detail information about the current playing media file, you may go back to the media preview or call the control panel using the '0, panel' button on the remote controller.

7) DVD View

DVD View is similar to the Movie View. You can configure the DVD setting in the DVD menu screen, then see the DVD movie on the full screen, just push the 'Enter' button on the remote controller.

8) TV View

In order to see the TV using Multi-Median, firstly you need to select the TV card you have in the setup menu. Please see details about the setup of TV card on the '**Setting Environment**'. TV View is also similar to the Movie View. TV Channels are shown as like the media files in the Media File View. You can watch the TV channel that you want using the 'Enter' button on the remote controller. If you see the TV channel on the full screen, you can input the channel number using the number buttons of the remote controller.

9) Digital Camcorder View

Digital Camcorder View supports all the digital camcorder devices which could be connected to IEEE1394 port of the PC using the DV format. You can see the current screen of the digital camcorder or you can control the digital camcorder using the remote controller on the playback mode of the digital camcorder. You can enjoy the video that is recorded on your digital camcorder or record the video as a movie file to your HDD using the 'Play', 'Pause', 'Fast Forward', 'Rewind'

and 'Rec' button of the remote controller. **The recording feature of Digital Camcorder would be supported on the future update.**

2. Using Remote Controller on the Multi-Median

Multi-Median could be controlled by iMON MM or iMON RSC remote controller. Especially, iMON MM supports the special features of Multi-Median, so you can have more control power on Multi-Median using iMON MM remote controller. Please refer to the remote controller button usage on the below.

1) Up, Down, Left, Right buttons

These buttons are used for moving the focus on the Multi-Median. After moving the focus, then you could select the icon that you want.

2) Enter button

'Enter' button is used to enter to the next view on the Multi-Median. After moving the focus to the icon and folder that you want, push the 'Enter' button to enter to the next step.

3) Backspace button ('ESC/Back button on the iMON MM remote controller)

'Backspace' button is used to go back to the previous view of the Multi-Median.

4) Select button

'Select' button is used to add or remove the media file to the current playlist in the Media Folder/File View. Actually, this is not to delete the media file, but just exclude the file from the playlist, so you can add the media file again to the playlist at any time you want.

5) Play button

'Play' button is used to 'Play' the media file. You can play the media file on the media preview if you enter from the media file view using the 'Enter' button. You can use this button on the TV view as a 'Play' command when you use the Time Shift feature. **Time shift feature will be updated in the next update.**

6) Pause button

'Pause' button is used to make 'pause' the current playing media. You can use this button on TV view as a 'pause' command when you use the Time Shift feature. **Time shift feature will be updated in the next update.**

7) Prev. (CH-) button

"Prev.(CH-)" button is used to make 'previous' command. This button is used to as 'Channel Down' command at the TV view.

8) 'Next (CH+) button

'Next(CH+)' button is used to make 'next'. This button is used to as 'Channel Up' command at

the TV view.

9) Rew button

'Rew' button is used to make 'rewind' command.

10) F.FWD button

'F.FWD' button is used to make 'fast forward' command.

11) Stop button

'Stop' button is used to make 'stop' command.

12) Open button

'Open' button is used to make 'open' command for the CD/DVD Rom.

13) REC button

'REC' button is used to make 'record' command at TV and Digital Camcoder view. You can choose the Codec for recording and other recording properties through the setting.

14) Bookmark button

'Bookmark' button could set current position of the movie as a bookmark like DVD chapter. If you push the 'Bookmark' button during the watching movie, the current position would be recorded as a bookmark.

15) Thumbnail button

'Thumbnail' button captures the still image from the Movie and TV, then save the captured image as thumbnail of the Movie and TV channel.

16) Aspect Ratio button

'Aspect Ratio' button changes the aspect ratio of the Movie and TV. In the case of Movie, there are four different aspect ratio options, normal, TV(4:3), HDTV(16:9), Screen1(1.85:1) and Screen2(2.35:1). In the case of TV, you can choose the aspect ratio between TV and HDTV aspect ratio.

17) Menu (DVD)

'Menu' button works on the DVD view and has a function that goes to the menu of the DVD title.

18) Caption (DVD)

'Caption' button works on the DVD view and has a function that changes the caption (subtitle).

19) Language (DVD)

'Language' button works on the DVD view and has a function that changes the language (audio).

20) Full Screen (DVD)

'Full Screen' button works on the every media view and has a function to go to the full screen mode directly.

21) Number 1 button (My Music)

'Number 1' button changes the current media to My Music.

22) Number 2 button (My Movie)

'Number 2' button changes the current media to My Movie.

23) Number 3 button (My Photo)

'Number 3' button changes the current media to My Photo.

24) Number 4 button (My DVD)

'Number 4' button changes the current media to My DVD.

25) Number 5 button (My Home)

'Number 5' button stops the current media and go back to the Main View.

26) Number 6 button (My TV)

'Number 6' button changes the current media to My TV.

27) Number 7 button (FIND)

'Number 7' button is used to search the media file on the current playlist.

28) Number 8 button (Setup)

'Number 8' button is used to call the setup view.

29) Number 9 button (Playlist)

'Number 9' button is used to call the current playlist.

30) Number 0 button (Panel)

'Number 0' button is used to show the control panel (control bar and shortcut bar). You can use the up, down, left and right button in order to select the control button on the control bar and shortcut bar.

31) Special feature of Number buttons

In the full screen view of TV, you can use the number button in order to input the channel number directly. In the 'Find View', you can use the number button to enter alphabets.

3. Using Mouse on Multi-Median

Multi-Median could be controlled with mouse, but in order to excute the Multi-Median, you need an iMON Station which is connected to USB port of your PC through internal or external connection. If you move the mouse pointer to the upside or downside of the screen, you may see the control panel (control bar or shortcut bar). All the buttons on the control panel could be controlled with mouse left click action.



4. Setting Environment

Multi-Median is designed to change the settings using just remote controller. Please refer to the followings in order to learn more about the various settings of Multi-Median.

1) Back

The 'Back' menu on the list is used to go back to the previous step of the current setting.

2) Scan Media

Multi-Median provides the powerful media database which scans the media files on your PC, and this media database helps you to select the media file you want without searching through the explorer one by one. When you execute the Multi-Median for the first time, the default scan folder sets as 'My Music', 'My Video' and 'My Pictures' folders under 'My Documents' folder. You can change this scan folder setting using the 'Scan Media' menu. If you have a TV card in your PC, you can search your TV card device using this menu. Normally, TV card device is composed of 'TV Video Device' and 'TV Audio Device'. Please choose the device that you have.

3) Music

You can set many properties of the Music View. First, you can change the background image of the Multi-Median easily. This changing background image feature is provided on the other media view like 'Movie View', 'Picture View', 'DVD View' and 'TV View' too. Moreover, you can change the repeat option (Play All, Repeat All, Repeat Folder and Repeat Song) of your music playlist and turn on the shuffle option. In the case of Music, you can setup the folder view as 'Album', 'Artist', and 'Genre' according to the tag information of MP3 and OGG file.

4) Movie

You can set many properties of the Movie View. You could change the background image of the Movie view like Music View. Additionally, you can change the 'Brightness', 'Contrast', 'Saturation'

and 'Hue' setting. You can also change the 'Aspect Ratio', Size, Position, Sync, Font, Color, Bold, Outline and Shadow properties of the subtitle. Finally, you can remove the bookmark position that you made and change the repeat and shuffle settings.

5) Photo

You can set many properties of the Photo View. You could change the background image of the Movie view like the other media view. And you can change the duration of the photo slide show, setting of the transition effect and the repeat, shuffle settings.

6) TV

You can set many properties of the TV View. You could change the background image of the TV view like the other media view. And you can choose the 'Antenna' and 'Cable' for TV input source, auto channel scanning, screen and aspect ratio settings. For the recording setting, you can choose the Codec and the folder that your recording files would be stored. **Recording feature of TV will be updated on the next update.**

7) DVD

You can set many properties of the DVD View. You could change the background image of the DVD view like the other media view. Also you can change the 'Brightness', 'Contrast', 'Saturation', 'Hue' setting and 'Aspect Ratio'.

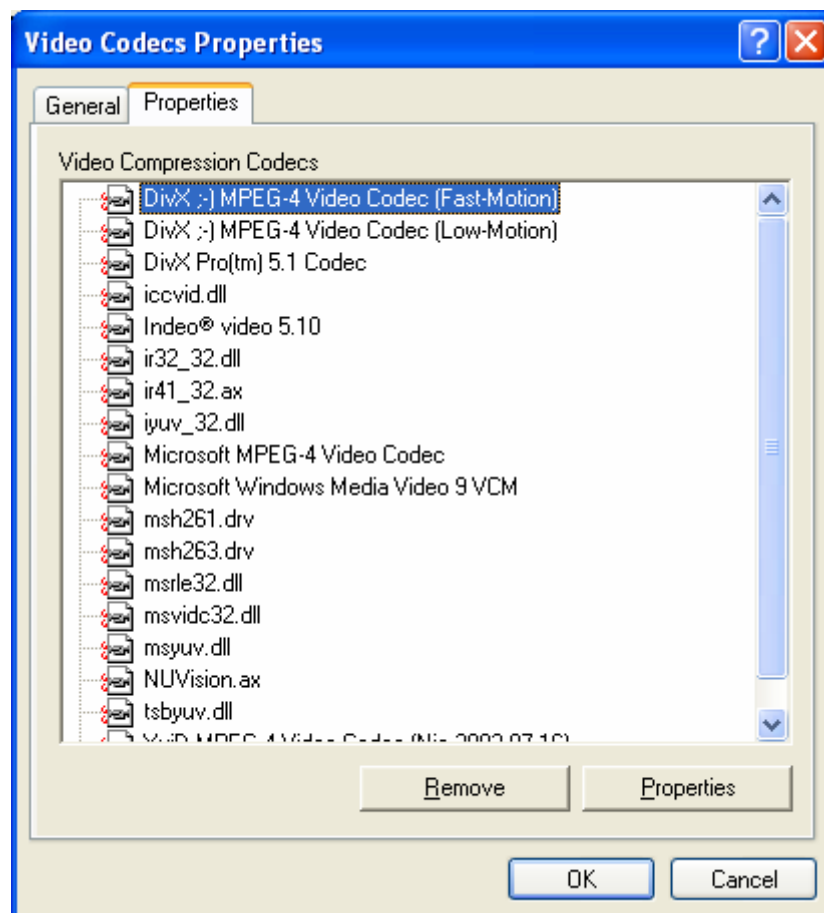
8) Digital Camcorder

You can set many properties of the Digital Camcorder View. You could change the background image of the Digital Camcorder view like the other media view. For the recording setting, you can choose the Codec and the folder that your recording files would be stored. **Recording feature of Digital Camcorder will be updated on the next update.**

5. Installation of Video Codec

In order to see the various video files which are encoded by different Codecs, you need to install the appropriate Codec of the video file. You can install the unified Codec package that installs many different Codecs at one time.

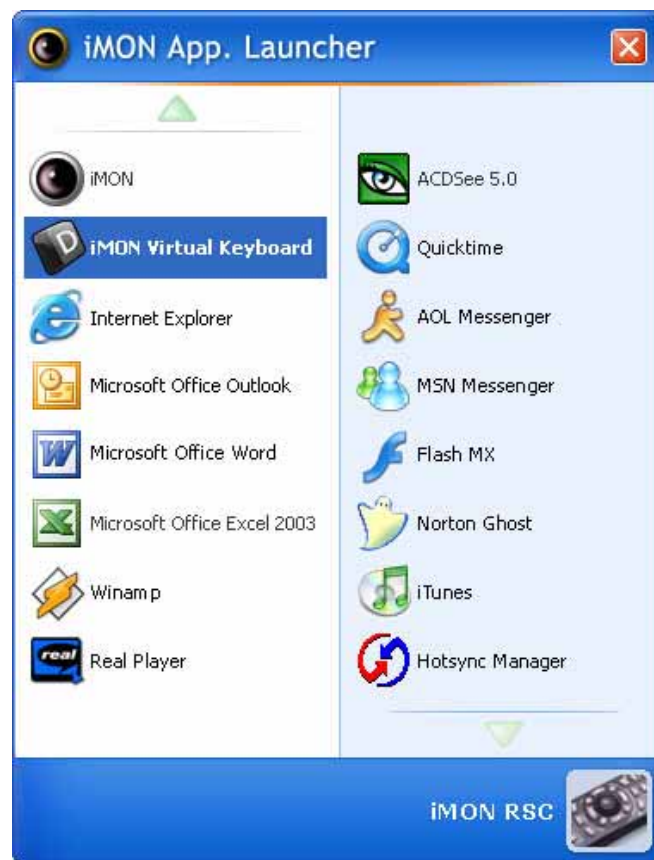
In order to see the Codec information that is installed to your PC, you can see this information on the property window of the 'Device Manager -> Sound, video and game controllers -> Video Codecs'.



iMON Users Guide

1. Using Application Launcher

Let's start Application Launcher. While iMON Manger is running, press the remote controller button that is assigned for 'Run Application Launcher' in Windows Command. The 'Application Launcher' will start as shown in the below picture.



'Application Launcher' and 'Task Switcher', described in the next chapter, are useful function that allows you to use your remote controller for basic Windows functions to launch the application on the Windows and to switch the application by using [ALT]+[TAB] key.

2. Using Task Switcher

Next, let's start 'Task Switcher'. This function is similar to '[ALT]+[TAB]' key combination that you use to activate other window while using another active Windows program. In Windows command setup, press the button registered in 'Run Task Switcher'. This window shows the program icons currently running in the Windows. Use arrow key to select the program to

activate and press Enter key.

3. Application Control

Now, once you have activated the program that you want using 'Application Launcher' and 'Task Switcher', you can use your registered remote controller button to control the program. For example, if you want to control WinAmp, activate WinAmp and send the signal of the remote controller. You can easily use the functions of WinAmp such as Play/Pause/Stop/Next/Previous/Volume Control. The point you should remind is that the command that would be performed is different depending on what program is active. Use 'Task Switcher' when you activate the program without mouse or keyboard.

4. Using All Time Control Mode

Basically, iMON Manager can control the S/W that is active. So if you want to control 'Windows Media Player' while 'WinAMP' is active, you have to activate 'Windows Media Player' first using 'iMON Task Switcher'. But you can use the "All-Time Control Mode" in order to control the specific S/W regardless of the current active state of the application. Please refer to the following in order to learn about the 'All Time Control Mode'.

1) Assign 'All Time Control Mode' function to Remote Controller

In the case of iMON MM, there is a 'All Time Control Mode' button is located on the left side of the down arrow key. But there is no 'All Time Control Mode' button on the iMON RSC. You need to assign the 'All Time Control Mode' command to the iMON RSC remote controller.

2) Execute the 'All Time Control' Mode

If you push the button assigned to the 'All Time Control Mode', you may see the following picture. The functions of the each screen button are as like follows.



- All Time Control Mode ON : Use the application shown in the iMON icon as a 'All Time Control' mode. You can use the Winamp as 'All Time Control' mode in the above picture. If the Winamp automatically starts, if it does not running before.
- All Time Control Mode OFF : The 'OFF' button makes disable the 'All-Time Control Mode'.
- All Time Control Mode SELECT : Choose the application that you want to control as a 'All Time Control Mode'

5. Using Monitor Resolution Changer

iMON could control various Windows system commands. You can run the screensaver directly and turn off the monitor using your iMON remote controller. One of these useful system commands, you can change your monitor resolution with remote controller. First, assign 'Monitor Resolution Changer' command to the button of your remote controller. If you run the 'Monitor Resolution Changer' command using remote controller, you may see the all monitor resolution list of your monitor. Then, please select the monitor resolution that you want. You could select the resolution set from the '**Screen Resolution**' on the option menu of iMON manager.

6. Using Timer

iMON Manager includes the Timer function that shuts down the PC at the defined time or sounds alarm after a certain time. There are three modes: Sleep, Alarm, and None. Sleep mode shuts down the PC after a certain period of time. Alarm mode sounds the alarm after a certain period of time. And, NONE is use to cancel any timer function that is already set.

Time offers two modes: ABS. and REL. Use ABS to enter a certain time and use REL to enter

the relative time to the current time. You can also use arrow keys to set the time.

To register the timer, press the timer button on the remote controller and use up/down arrow button to select MODE/TIME/Hour/Minute, or use Left/Right arrow button to adjust the value of each item. Then, press the timer button again. The remote input signal indicator changes as shown below in order to indicate the time that the 'SLEEP/ALARM' function will start.



Timer Function On



Timer Function On and All Time Control Mode enabled.

To cancel the timer, press the timer button and select the NONE mode. Then, press the timer button again.

7. Using Virtual Keyboard

iMON Manager includes the Virtual Keyboard function in order to help you type the alphabet on your application. Basically, the character input method is similar in manner to use the mobile phone dial pad. In order to input the alphabet character that you want, please locate the cursor on the text input field and execute the "Application Launcher". And select the "iMON Virtual Keyboard" on the "Application Launcher".

There are five different input character sets are pre-defined on the iMON Virtual Keyboard for your typing. These are English Capital letters, English Small letters, Numbers, Special letters and words for web surfing. You may input the character as shown on the Virtual Keyboard using these buttons on the iMON remote controller.



You may input the characters like above picture, and then return the input characters to the application using 'Enter' button on the highlighted text input window.

8. Register New Remote Controller

If you push the 'ADD' button on the iMON Manager, you may see the 'Adding New Remote Controller' window. If you use the iMON remote controller like iMON MM or iMON RSC, please use the remote controller name as 'iMON MM' and 'iMON RSC' only. You can use the remote controller of home appliance like TV, VTR in order to control the PC. You can also register several remote controllers to iMON Manager and use them.

9. Setting Program Command

You can control many applications which are registered to the 'Program Command' setting on the iMON Manager. Many applications which are installed in your PC would be automatically registered during the installation process. You can also register the other application that you want. In order to register the application, you can follow the steps on the below on the Program CMD of the iMON setup.

1) Register Application

Press 'Add Program' button to bring up a list for currently running applications as shown in the figure below. This function allows you to select the application that you want to register from the currently running applications. You can register the application that you want without knowing the exact location of it. If the application is not running, please use the 'Search by file name' in order to search the application.

2) Add Function

If you want to add the function, please click the 'Add' button on the Function. The 'Registration Wizard for RC buttons' will be executed automatically.

3) Type the Function Name

Type the name of the function that you want to control using the remote controller.

4) Keyboard Shortcut Setup

Please input the keyboard shortcut that you want, if you want to input the command that has the keyboard shortcut, 'Ctrl+P', type the 'Ctrl' key to the first field and type the 'P' key to the second field.

5) Input the Remote Controller Button

Press the remote controller button that you want to assign to the command twice, two red bars

will be displayed to notice the IR signal assignment.

6) Confirmation

If you finished the remote controller registration, please close the setup window, and confirm the remote control action on the selected application.



Since iMON Manager compares the button signal from the remote controller with the currently active application command list to execute the corresponding function of the application. So you can share the same remote controller button among different applications. That is, even though the playback shortcut keys are different on WinAmp and Windows Media player, you can set the same 'play' button for the remote controller to play either of both programs.

10. Setting Windows Command

In the Windows CMD section of iMON setup window, there are three different sections (Keyboard CMD, Mouse CMD and Power Management CMD) of Windows commands that will help you to use Windows with remote controller. You can assign various Windows system commands to remote controller, and use it.



You cannot use the remote controller buttons which are assigned for Windows commands to the other applications. Therefore, it is recommended to set up the required functions first depending on the number of remote controller buttons that you want to use. Please be sure to set buttons for 'Run application Launcher' and 'Run Task Switcher' supported by iMON Manager since they are essentially required for convenient use of iMON.



There is a restriction to set Windows commands in iMON RSC. You are not able to change the registration of the "Mouse/Keyboard" toggle button and the Joystick functions, which are UP/DOWN/LEFT/RIGHT arrow keys, 16 directional mouse movements, [Enter] key, and mouse [double click] function.

11. Setting Customized Windows Command

You can use the 'Customized Windows Command' to the Windows system commands that is not

prepared to the 'Windows Command' setting. The setting of 'Customized Windows Command' is similar to that of 'Windows Command'.

12. Setting Macro

There is a restriction that you cannot register the keyboard shortcut which is composed of more than four keyboard keys combination. Normally, most of windows keyboard shortcut is composed of less than three keys. But if you want to log in to the website, you need a ID and password, in this case, you can use the Macro function of iMON usefully. You can also register the command which is composed of mouse button and keyboard keys. The registration of Macro is little different to the above commands setting of the remote controller. Please follow the steps on the below in order to register the Macro.

1) Add Macro

Please select the Macro on the iMON setup window, then push the 'Add' button to register the Macro.

2) Input the Macro Name

Please input the Macro name that you want in the 'Registration Wizard for RC buttons', then click the 'Next' button.

3) Input the Macro

After input the name of Macro, then click the 'Next' button, you may see the setup window of Macro. You may see also 'virtual keyboard and mouse too. Please use your mouse and select the virtual keyboard key and virtual mouse button that you want. After finishing the Macro input, please click the 'Next' button to finish the Macro setup. The next process of Macro setup is same like 'Windows CMD' setup.

13. Setting Option

You can change and set the options. The following is the details about the several option parameters that iMON provide.

1) 'All Time Control Mode'

You can choose the application that you want to use as an 'All Time Control Mode'. This option has a same function like push the 'All Time Control Mode' button on the remote controller.

2) iMON Indicator on the Desktop

You can assign the display way of iMON indicator on the desktop. The following is the various

states of iMON indicator that shows you the several informations.



Normal iMON Indicator



Registered IR Signal is detected



Not Registered IR Signal is detected



Shows the System Volume



Shows the System Volume Mute



Shows the usage of iMON RSC Joystick as a Mouse



Shows the usage of iMON RSC Joystick as a Keyboard

3) Adding Sound Effect

This option is the function that let you know the IR signal reception from the iMON Station. You can set the sound or turn off the sound of IR signal reception.

4) Mouse

You can change the maximum speed and the rising time of mouse pointer movement on the iMON RSC remote controller.

5) Keyboard

You can change the repeat delay and repeat time of the keyboard. This setting is useful when you use the remote controller to control the volume.

6) Timer

You can change the sound of alarm and the duration of the alarm sound.

7) Monitor Resolution

You can select the resolution that will displayed on the 'Monitor Resolution Changer' window.

8) Virtual Keyboard

You can assign the word that you will use the URL set of iMON virtual keyboard.

Update of iMON & Multi-Median

iMON and Multi-Median will be updated continuously through the iMON website, <http://iMON.soundgraph.com/>. If you have any difficulties to use iMON and Multi-Median or have any question to us, please visit our website, and post a message.

SoundGraph, Inc.

■ Address

SoundGraph, 501 Hanyang Institute of Technology, Hanyang University, 17, Handang-Dong, Sungdong-Gu, Seoul, Korea

■ Telephone

02-2298-2374~5

■ Fax

02-2282-6378

■ Web Site

<http://iMON.soundgraph.com>

<http://www.soundgraph.com>

■ For any inquiry, send us an e-mail to the following address.

iMON Development Team: **iMON@soundgraph.com**

1. It is strictly prohibited to copy or publish this user's manual online without consent of SoundGraph Co., Ltd.
2. The contents of this manual are subject to change without any prior notice for product function addition and performance enhancement.
3. iMON is the registered trademark for USB IR reception device of SoundGraph Co., Ltd.
4. Other mentioned software band names are registered trademarks of each owner.